

ULTIMATE[®]

Oil-Fired Hot Water Boilers



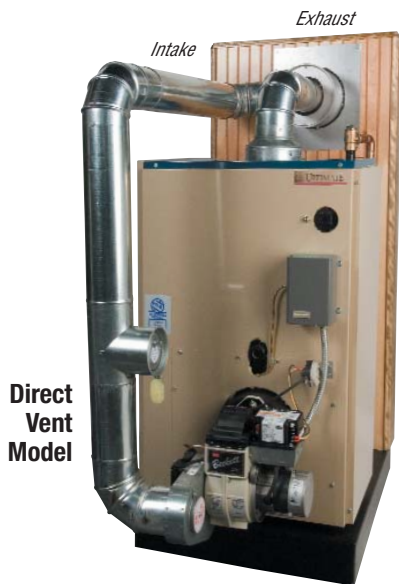
The Ultimate Solution!

An ISO 9001-2000 Certified Company



ULTIMATE®

The Ultimate Series of Hot Water Boilers combines versatility, efficiency and design to make it the ideal choice for heating comfort and reliability.



ULTIMATE Versatility

The ULTIMATE Series is one of the most versatile Hydronic solutions available today...

- Indoors, choose the ULTIMATE for either Chimney or Direct Vent Applications
- Add the tankless coil option to heat tap water for kitchen and bath
- Outdoors choose ULTIMATE's double insulated, stainless steel jacket model to heat your pool

ULTIMATE Efficiency

As a result of its advanced design, the ULTIMATE Series features ENERGY STAR® rated efficiency of up to 87.6% A.F.U.E! The ULTIMATE dramatically reduces fuel costs providing an excellent return on your home heating investment.

ULTIMATE Design

ULTIMATE's advanced engineering combines superior pressure-fired burner performance with a high tech heat exchanger design featuring special heat "scrubbing" thermal pins for greater space heating efficiency. Every ULTIMATE is thoroughly blanketed with insulation, adding to its superior heat transfer and quiet operation. The ULTIMATE's combined efficiency gains result in higher output from a much smaller, more compact boiler making the ULTIMATE easier to install.

The ULTIMATE boiler utilizes both a pre- and post-purge feature, providing smoother, more positive start-ups and shut-offs for greater reliability. This keeps the ULTIMATE cleaner internally allowing maximum fuel efficiency.



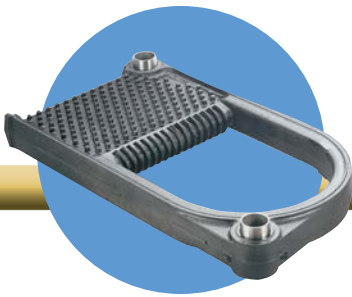
Thru Wall Venting using the ULTIMATE Direct Exhaust System



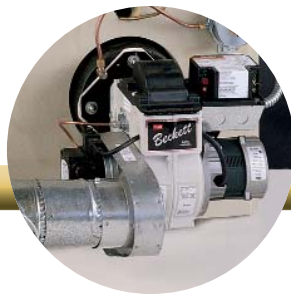
Optional 6GPM Tankless Coil heats domestic hot water



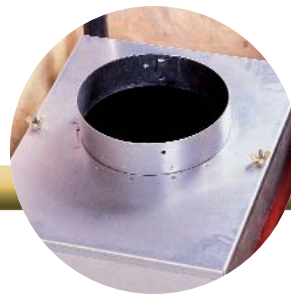
Stainless Steel Jacket Model heats pools



Cast iron Heat Exchanger sections for maximum reliability



Post purge keeps boiler cleaner, safer.



Easy access to Heat Exchanger for cleaning



Tankless coil door provides easy access

ULTIMATE Serviceability


The ULTIMATE Series requires minimal annual maintenance. The same basic boiler is used regardless of applications, simplifying service and parts ordering. The ULTIMATE features easily accessible standard controls. Corrosion resistant brass wing nuts make it easy to remove the flue collector cover exposing the entire heat exchanger for easy and thorough cleaning.

An easy access tankless coil door allows convenient service and inspection when necessary. Stainless steel studs on coil plates do not rust and remain easy to remove.


ULTIMATE Peace of Mind

The ULTIMATE Series is backed by the strongest warranty in the industry - a full twenty year warranty covering the entire heat exchanger.

Quality Burner Options



Beckett



Riello

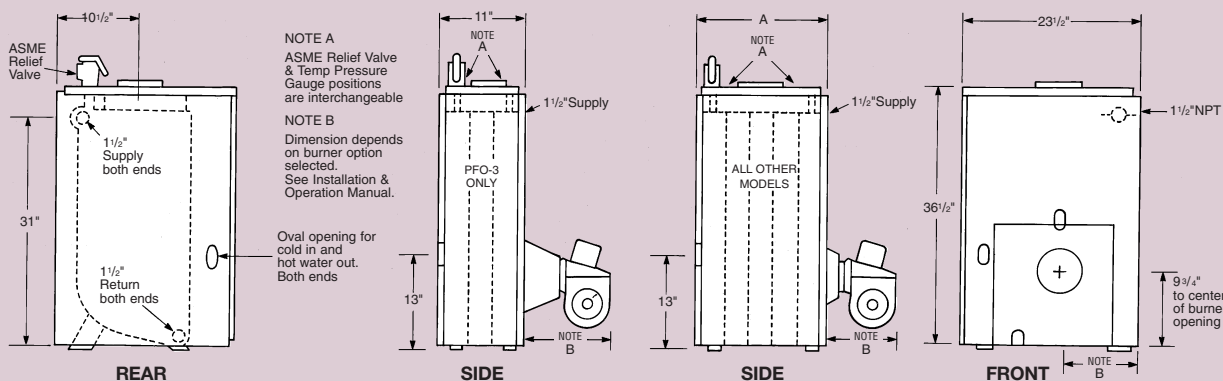
ULTIMATE WATER FACTORY SUPPLIED EQUIPMENT

STANDARD EQUIPMENT (indoor, chimney vent)

- Assembled heat exchanger with combustion chamber and flue collector mounted.
- Insulated jacket – temperature/pressure gauge
- ASME relief valve – standard controls
- Circulator
- Beckett pressure fired flame retention burner with inlet air shutter

OPTIONAL EQUIPMENT:

- Domestic hot water coil
- Stainless steel jacket for outdoor installation
- Direct vent hood exhaust system for through-the-wall venting includes (inlet & exhaust hoods, pressure switch, pre/post purge Beckett burner, exterior wall plate and vacuum relief)
- Riello R40 Series Burners (chimney vent application only, available as knockdown only)



Oil-Fired Models Indoor

MODEL SECTIONS	RECOMMENDED FIRING RATES GPH	HEATING CAPACITY MBH	NET I=B=R RATING MBH	AFUE	FLUE SIZE ¹	LENGTH "A" DIMENSION	FDVS MODEL SUFFIX ²	OUTDOOR MODEL SUFFIX	
		Note 1	Note 2	Note 3					
Without Tankless Coil									
*PFO-3	Min.	.45	56	48	87.5	5"	11"	FDVS-4 A	N/A
	Max.	.90	105	91	82.8	5"	11"	FDVS-4 A	N/A
*PFO-4	Min.	.60	74	64	87.5	6"	14 1/4"	FDVS-6 A	W
	Max.	1.35	159	138	83.3	6"	14 1/4"	FDVS-6 A	W
*PFO-5	Min.	.75	93	81	87.5	6"	17 1/2"	FDVS-6 A	N/A
	Max.	1.70	199	173	83.9	6"	17 1/2"	FDVS-6 A	N/A
*PFO-7	Min.	1.05	130	113	87.6	7"	24"	FDVS-6 A	W
	Max.	2.35	276	240	**	7"	24"	FDVS-6 S	W
*PFO-9	Min.	1.35	167	146	87.6	8"	30 1/2"	FDVS-6 A	W
	Max.	3.00	353	307	**	8"	30 1/2"	FDVS-6 S	W
With Tankless Coil									
*PFO-3T	Min.	.50	62	54	87.6	5"	11"	FDVS-4 A	N/A
	Max.	1.10	129	112	82.9	5"	11"	FDVS-4 A	N/A
*PFO-4T	Min.	.65	80	70	87.5	6"	14 1/4"	FDVS-6 A	N/A
	Max.	1.45	169	147	83.3	6"	14 1/4"	FDVS-6 A	N/A
*PFO-5T	Min.	.80	99	86	87.5	6"	17 1/2"	FDVS-6 A	N/A
	Max.	1.75	208	182	83.8	6"	17 1/2"	FDVS-6 A	N/A
*PFO-6T	Min.	.95	117	102	87.5	7"	24"	FDVS-6 A	N/A
	Max.	2.10	250	217	84.3	7"	24"	FDVS-6 S	N/A
*PFO-8T	Min.	1.25	154	134	87.4	8"	30 1/2"	FDVS-6 A	N/A
	Max.	2.75	324	282	**	8"	30 1/2"	FDVS-6 S	N/A

* Indicates an ENERGY STAR® product.

** Firing rate is greater than that requiring testing under DOE regulation.

1- Chimney size for models fired under 2.00 GPH is 8" x 8"; for models fired over 2.00 GPH chimney size is 8" x 12".

2- Direct Vent System includes 4" Exhaust for boilers fired at 1.00 GPH or less and a 6" Exhaust for boilers fired over 1.00 GPH. Beckett Post-Purge Burner is noted by the "A" in FDVS Model suffix and "S" represents Beckett CF375 Post-Purge Burner.

3- Chimney size is 8" x 8".

NOTES:

1) DOE HEATING CAPACITY IS INDICATED IN THOUSANDS OF BTU PER HOUR. USE OF ANTIFREEZE IN ANY BOILER CAN REDUCE CAPACITY, NET OUTPUT AND EFFICIENCY BY A SIGNIFICANT AMOUNT.

2) NET RATINGS ARE INDICATED IN THOUSANDS OF BTU PER HOUR BASED ON A PIPING AND PICK-UP ALLOWANCE OF 1.15.

3) ANNUAL FUEL UTILIZATION EFFICIENCY BASED ON TESTS PERFORMED UNDER U.S. DEPARTMENT OF ENERGY STANDARDS AND REPORTED TO FEDERAL TRADE COMMISSION.

Specifications subject to change without notice.

ULTIMATE

P.O. Box 4729 • Utica, NY 13504
 Tel. 315-797-1310 • Fax 866-432-7329
 Web Site: www.ecrinternational.com
 E-Mail: info@ecrinternational.com

USA Homeowner Assistance:
866-847-6656

USA Contractor Assistance:
800-325-5479

An **ECR** International Brand

An ISO 9001-2000 Certified Company

